

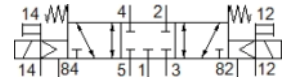
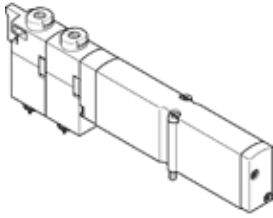
Solenoid valve

VMPA1-M1H-G-PI

Part number: 533345

FESTO

For valve manifold MPA-S.



Data sheet

Feature	values
Valve function	5/3 closed
Type of actuation	electrical
Valve size	10 mm
Standard nominal flow rate	320 l/min
Working pressure	-0.9 ... 10 bar
Design structure	Piston slide
Type of reset	mechanical spring
Protection class	IP65 to IEC 60529
Authorization	c UL us - Recognized (OL)
Sealing principle	soft
Assembly position	Any
Manual override	detenting Pushing
Type of piloting	Piloted
Flow direction	reversible
Freedom from overlap	Yes
Note on forced dynamisation	Switching frequency at least once a week
Signal status display	Yes
Pilot pressure	3 ... 8 bar
Suitability for vacuum	Yes
Standard nominal flow rate with QS-6	320 l/min
Switching time off	35 ms
Switching time on	10 ms
Switching time reversal	15 ms
Max. positive test pulse with logic 0	400 µs
Max. negative test pulse with logic 1	200 µs
Permissible voltage fluctuation	+/- 25 %
Operating medium	Compressed air in accordance with ISO8573-1:2010 [7:4:4]
Note on operating and pilot medium	Lubricated operation possible (subsequently required for further operation)
Vibration resistance	Transport application test at severity level 2 in accordance with FN 942017-4 and EN 60068-2-6
Shock resistance	Shock test with severity level 2 in accordance with FN 942017-5 and EN 60068-2-27
Corrosion resistance classification CRC	1
Storage temperature	-20 ... 40 °C
Medium temperature	-5 ... 50 °C
Ambient temperature	-5 ... 50 °C
Max. tightening torque, valve mounting	0.25 Nm
Product weight	56 g
Mounting type	with through hole
Materials note	Conforms to RoHS
Materials information for seals	NBR
Materials information, housing	Aluminum die cast