

start valve

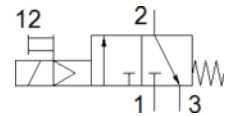
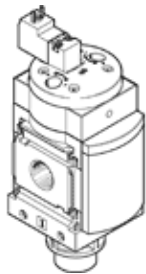
MS6-EE-1/2-10V24

Part number: 542582

★ Core product range

FESTO

Electrical, direction of flow: from left to right.



Data sheet

Feature	values
Design structure	Piston slide
Type of actuation	electrical
Exhaust-air function	not throttleable
Manual override	Pushing
Type of reset	mechanical spring
Type of piloting	Piloted
Valve function	3/2 closed, monostable
Working pressure	4 ... 10 bar
C value	29 l/sbar
b value	0.4
Standard nominal flow rate	7,000 l/min
Duty cycle	100%
Characteristic coil data	24 V DC: 2.5 W
Permissible voltage fluctuation	+/- 10 %
Operating medium	Compressed air in accordance with ISO8573-1:2010 [7:4:4] Inert gases
Note on operating and pilot medium	Lubricated operation possible (subsequently required for further operation)
Corrosion resistance classification CRC	2
Materials note	Conforms to RoHS
Medium temperature	-10 ... 60 °C
Protection class	IP65
Ambient temperature	-10 ... 50 °C
Authorization	c UL us - Recognized (OL)
Mounting type	Optional Line installation with accessories
Assembly position	Any
Flow direction	non reversible
Product weight	740 g
Pneumatic connection, port 1	G1/2
Pneumatic connection, port 2	G1/2
Pneumatic connection, port 3	G1/2
Pilot air supply	Internal
Electrical connection	Plug Cubic design Per DIN EN 175301-803 Design C
Materials information for seals	NBR
Materials information, housing	Aluminum die cast